



WE MAKE CLEAN
ENERGY HAPPEN®

WESTERN INTERSTATES MONTHLY NEWSLETTER

FEBRUARY 2026

Welcome to the February 2026 edition of the Williams Western Interstates Monthly Newsletter!

This month's update brings you the latest news, project updates and opportunities, storage and fuel rate information, and maintenance schedules. Stay informed on key developments across Western Interstates as we continue to deliver reliable service and explore growth opportunities in the Western region.

NEWSLETTER CONTENTS

1. Recent News & Updates
2. Current Opportunities
3. MWP Clay Basin Storage Update
4. MWP January 2025 Fuel Charges
5. MWP March Fuel Reimbursement Rates
6. January 2025 Constraints
7. 2026 Maintenance Calendar
8. Team Contacts

RECENT NEWS & UPDATES

Organizational Leadership Changes

Effective February 21, Payvand Fazel who is currently VP of Western Interstates will assume the role of SVP of Commercial, covering all of Williams' assets. Taylor James who is currently VP of Colorado G&P will assume the role of VP of Western Interstates.

Williams Holds 2026 Analyst Day; Reporting Fourth-Quarter, Full-Year 2025 Earnings

Williams held Analyst Day on February 10. This event was for analysts, investors, and stakeholders to hear from our organization's leaders on several key topics including corporate strategy, operations & execution, a financial outlook and more. To learn more and view the presentation, visit the Williams website [here](#). You can catch the replay [here](#).

Environmental Assessment Issued for Wild Trail Project

FERC has issued its Environmental Assessment (EA) for the Wild Trail Project, finding no significant impacts. The project will enhance regional connectivity and support sustainable energy development. Public comments were due by January 14. Read more about the project [here](#).

New Maintenance Coordinator

Dane Peterson has taken over the role of Maintenance Coordinator for Western Interstates.

CURRENT OPPORTUNITIES

MountainWest

Unsubscribed Capacity

- [MWP Unsubscribed Capacity](#)
- [MWOP Unsubscribed Capacity](#)
- [WRH Unsubscribed Capacity](#)

Project Overviews

- [Uinta Basin Expansion II \(UBE II\)](#)
- [Fidlar Expansion \(FidEx\)](#)

Firm Unsold Transportation

All capacity listings are subject to change, check each TSP website for accurate information.

As of 2/19/2026

MountainWest Pipeline					
Rate	Receipt	Delivery	Start Date	End Date	Quantity (Dth/d)
T-1	836 K.R. GOSHEN	454 RIFLE SWALLOW LANE	2/19/2026	2/28/2026	31,200
			3/1/2026	3/31/2026	11,200
		410 WHITE RIVER HUB	2/19/2026	2/28/2026	56,746

			3/1/2026	3/31/2026	37,400
		332 PAYSON ML 104	2/19/2026	2/28/2026	75,300
			3/1/2026	IN PERPETUITY	69,134
	370 RED WASH FIDLAR	454 RIFLE SWALLOW LANE	2/19/2026	2/28/2026	31,200
				3/1/2026	3/31/2026
		410 WHITE RIVER HUB	2/19/2026	2/28/2026	50,000
				3/1/2026	3/31/2026
	421 CHIPETA PROCESSING	454 RIFLE SWALLOW LANE	2/19/2026	2/28/2026	31,200
				3/1/2026	3/31/2026
		410 WHITE RIVER HUB	2/19/2026	2/28/2026	56,746
				3/1/2026	3/31/2026
	66 CLAY BASIN QPC WD	281 KANDA / COL OTPL	2/19/2026	2/28/2026	80,000
		171 KANDA / COL CIG	2/19/2026	2/28/2026	80,000
		167 SKULL CREEK	2/19/2026	2/28/2026	13,847
				3/1/2026	IN PERPETUITY
		454 RIFLE SWALLOW LANE	2/19/2026	2/28/2026	25,114
				3/1/2026	IN PERPETUITY
	410 WHITE RIVER HUB	2/19/2026	2/28/2026	25,114	
			3/1/2026	IN PERPETUITY	7,114

MountainWest Overthrust Pipeline					
Rate	Receipt	Delivery	Start Date	End Date	Quantity (Dth/d)
FT	10025 OPAL PROCESSING PLANT	10027 WAMSUTTER M&R	3/1/2026	12/31/2027	32,569
	10026 PIONEER PROCESSING PLANT		2/19/2026	2/28/2026	111,649
			3/1/2026	12/31/2027	189,000
	10032 BELLE BUTTE STORAGE		2/20/2026	2/28/2026	265,200
			3/1/2026	IN PERPETUITY	295,000
		10030 RUBY TOPAZ	2/20/2026	2/28/2026	73,557
			3/1/2026	4/30/2026	47,057

White River Hub					
Rate	Receipt	Delivery	Start Date	End Date	Quantity (Dth/d)
FT	40604 MEEKER PLANT INTRCNT	40604 WHITE / TRANS RYAL GUL	2/19/2026	IN PERPETUITY	100,000

Northwest Pipeline

Short-Term Firm Capacity Offerings:

- See all [TSP Capacity Offerings](#)

Offering Spotlight:

As of 2/19/2026

Northwest Pipeline					
Package ID	Receipt	Delivery	Quantity	Earliest Date Available	Footnote ID
125-1	IGNACIO PLANT	KERN RIVER MUDDY CREEK DELIVERY	9,889	4/2/2026	7
35	OPAL PLANT	LA PLATA	29,429	2/18/2026	

*The information listed is subject to change without notice and represents the most current list of Northwest available capacity

- 7) Northwest is currently only accepting the currently effective maximum base tariff rate as the minimum bid rate for this capacity.
- 9) This capacity is currently under contract with an evergreen clause. This capacity can be made available by providing ten business days prior written termination notification to the current holder of the capacity. This means termination notification must be received no later than 5:00 p.m. Mountain Clock Time on the eleventh business day prior to the beginning of the next month.

MOUNTAINWEST CLAY BASIN STORAGE

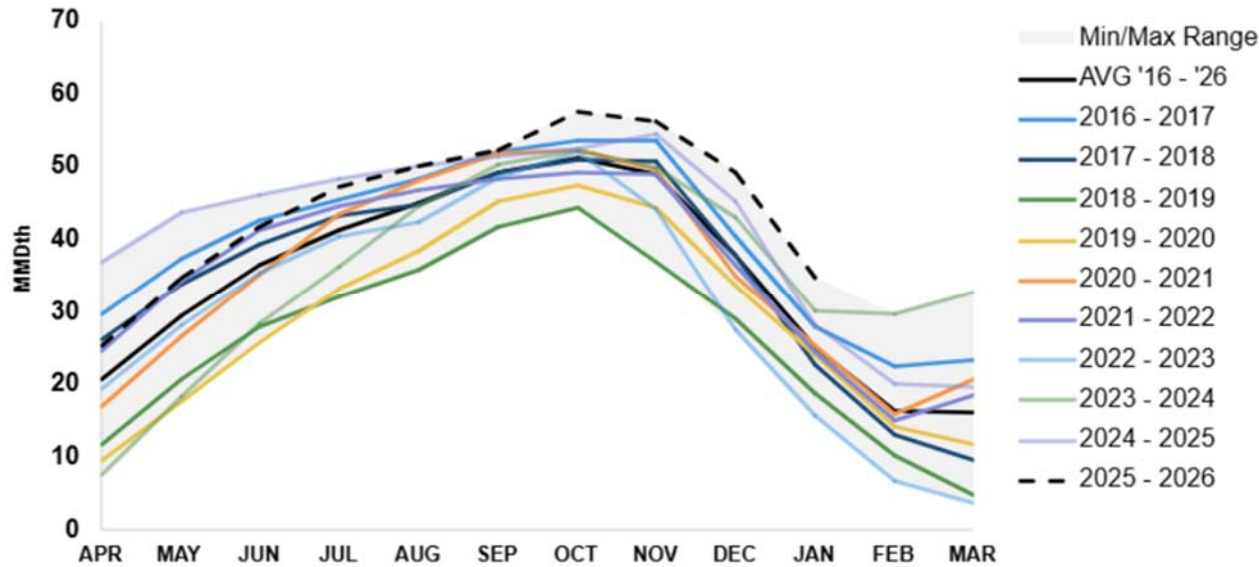
Follow the links below for additional details on the Clay Basin storage update:

- [MWP Clay Basin Inventory](#)
- [MWP Clay Basin Storage Overview Presentation](#)

Clay Basin Working Gas Inventory (As of Gas Day 2/17/2026)

Estimated Total Working Gas	62,356,750
Estimated Total Working Gas Inventory	31,161,544
Park and Loan Inventory (Included in Total Inventory)	-775,000
Interruptible Inventory (Included in Total Inventory)	2,353,901
Working Gas Percent Full	49.97%
Previous Year's Total Clay Basin Reservoir Inventory	20,875,520
Previous Year's Percent of Reservoir Working Gas	36.33%
Estimated Current Daily Injection Capacity	100,000
Estimated Current Daily Park & Loan Injection Capacity	0
Estimated Current Daily Withdrawal Capacity	650,000
Withdrawal on NWP is Limited to:	320,000

Clay Basin Storage Snapshot



MOUNTAINWEST JANUARY 2025 FUEL CHARGES

Clay Basin Utility Fuel	0.00027%
Operating Fuel & Shrinkage	0.20473%
Conditioning Reimbursement Factor (Stipulation)	0.5%

MOUNTAINWEST FUEL REIMBURSEMENT RATES

Pipeline	March Fuel Rate
MWP	0.79%
MWOP	0.21%
WRH	-0.05%

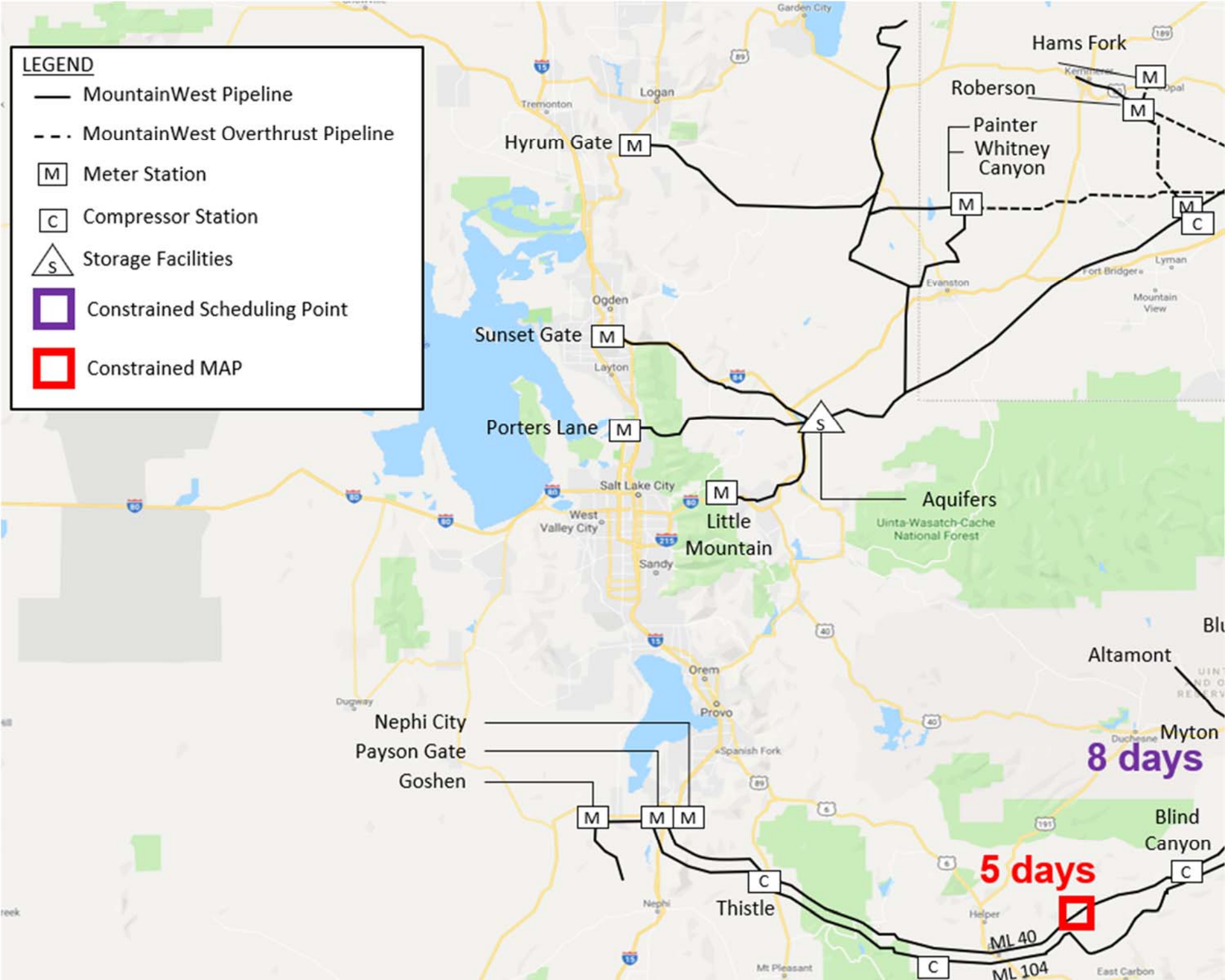
Follow the link provided for further details on the MWOP Fuel Gas Reimbursement: [MWOP Fuel Gas Reimbursement Percentage](#)

JANUARY 2025 CONSTRAINTS

MountainWest January 2025 Constraint Map

LEGEND

- MountainWest Pipeline
- - - MountainWest Overthrust Pipeline
- [M] Meter Station
- [C] Compressor Station
- [S] Storage Facilities
- [Purple Box] Constrained Scheduling Point
- [Red Box] Constrained MAP



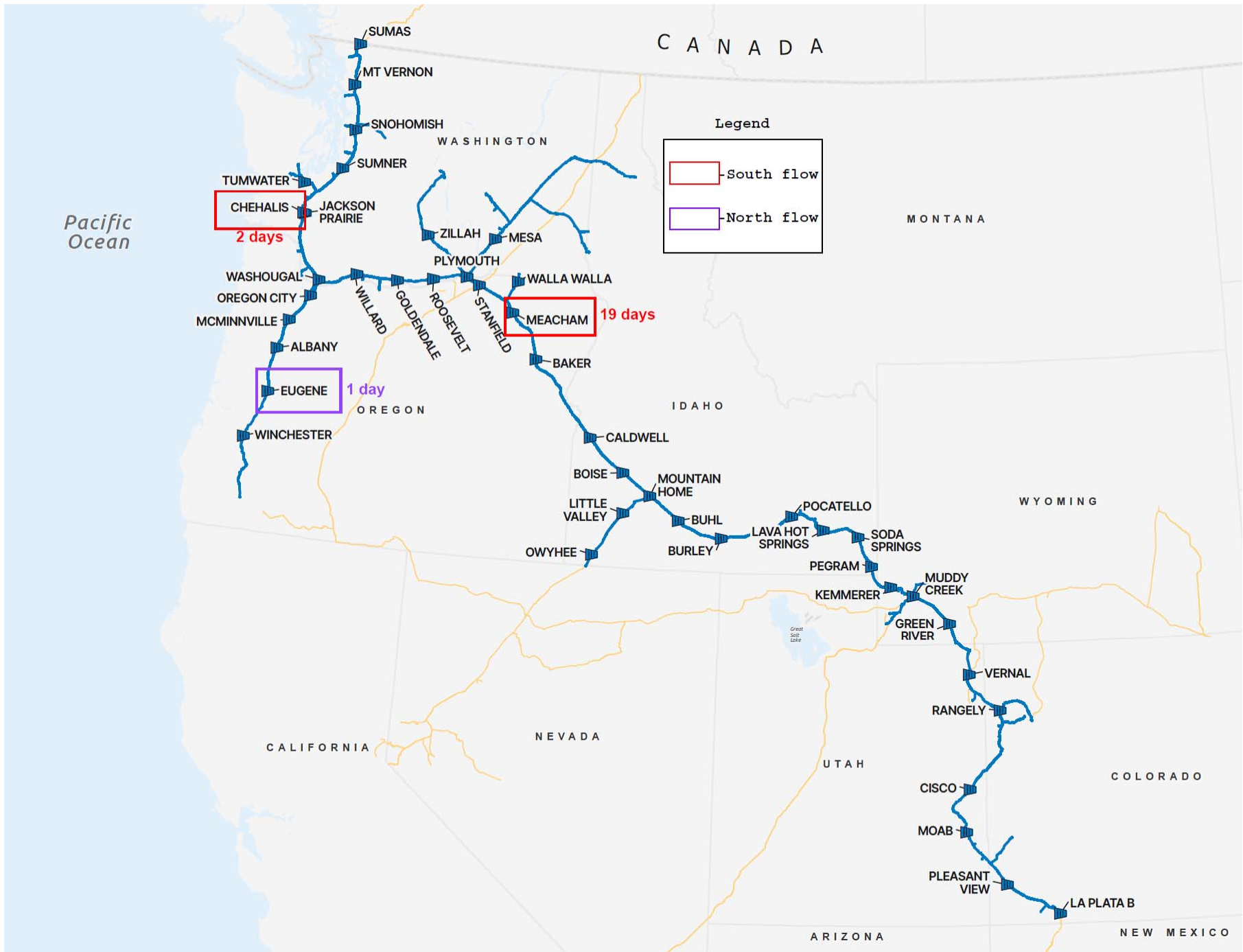
8 days

5 days

ML 40

ML 104

Northwest Pipeline January 2025 Constraint Map



MAINTENANCE CALENDAR

All maintenance is subject to change, check each TSP website for accurate information and dates.

Western Interstates will be hosting a Shipper wide maintenance call on March 17. More information will be posted on our EBBs soon.

Follow the links below for further details on system maintenance:

- [MWP Maintenance Schedule](#)
- [MWOP Maintenance Schedule](#)
- [WRH Maintenance Schedule](#)
- [NWP Maintenance Schedule](#)

MountainWest Pipeline			
Dates	Location	Project	Capacity Reduction
March 3 - 5	Fidlar CS	Station ESD Testing	0 Dth/d
March 4	Skull Creek CS	Station ESD Testing	All
March 28 - April 9	Clay Basin	Annual Withdrawal Test	All
April 20 - 24	Oak Springs CS	Station ESD Testing	TBD
April 27 - May 1	Simon CS	Station ESD Testing	0 Dth/d
May 3 - 9	JL46 / JL47	Anomaly Digs	TBD
May 12 - 13	Kanda CS	Station ESD Testing	All
May 18 - 22	Leroy CS	Station ESD Testing	0 Dth/d
June 15 - 19	Thistle Creek CS	Station ESD Testing	TBD
July 7 - 8	Coleman CS	Station ESD Testing	TBD
October 4 - 17	Clay Basin	Annual Injection Test	All

MountainWest Overthrust Pipeline			
Dates	Location	Project	Capacity Reduction
August 11 - 14	Rock Springs CS	Station ESD Testing	TBD

Northwest Pipeline			
Dates	Location	Project	Capacity Reduction
February 12 - 26	Oregon City CS	Unit 2 Unplanned Outage - South	0 MDth/d
April 6 - 8	La Plata B CS	ESD & Annual Solar Inspection	0/119 MDth/d
April 8 - 10	Moab CS	ESD & Annual Solar Inspection	0/76 MDth/d
April 13 - 17	Pleasant View CS	ESD & Annual Solar Inspection	0/74 MDth/d
May 12 - 21	La Plata B CS	La Plata to Pleasant View Pig Run - North	0 MDth/d
June 9 - October 15	Buhl CS	CS M & ERP	79/0 MDth/d
June 10 - August 15	Pocatello CS	CS M & ERP	0 MDth/d

TEAM CONTACTS

BUSINESS DEVELOPMENT & COMMERCIAL DEVELOPMENT			
Joseph Hulse	Director, Business Development & Commercial Development	Joseph.Hulse@Williams.com	(801) 244 - 0829
Business Development			
Jack Czapiga	Business Development Rep Sr	Jack.Czapiga@Williams.com	(801) 694 - 0740
Tyler Jones	Business Development Rep Sr	Tyler.Jones@Williams.com	(385) 548 - 2636
Xan Kotter	Business Development Lead	Xan.G.Kotter@Williams.com	(801) 558 - 6327
Jordan McDonough	Business Development Lead	Jordan.McDonough@Williams.com	(832) 374 - 9513
Commercial Development			
Carolyn Ebner	Commercial Development Lead	Carolyn.Ebner@Williams.com	(832) 953 - 6970
Tom Myrberg	Commercial Development Rep Sr	Tom.Myrberg@Williams.com	(801) 971 - 0706
Elena Shanin	Commercial Development Rep III	Elena.Shanin@Williams.com	(385) 271 - 9973

COMMERCIAL OPTIMIZATION, COMMERCIAL SERVICES & TRANSPORTATION SERVICES

Gary Venz	Director, Commercial Services	Gary.Venz@Williams.com	(801) 554 - 0550
------------------	-------------------------------	--	------------------

Commercial Optimization

Jenna Dean	Commercial Optimization Rep Lead	Jenna.Dean@williams.com	(281) 974 - 8300
------------	----------------------------------	--	------------------

Bradley Dillon	Commercial Optimization Rep Lead	Bradley.J.Dillon@Williams.com	(801) 580 - 1823
----------------	----------------------------------	--	------------------

Justin Rutherford	Commercial Optimization Rep Sr	Justin.Rutherford@Williams.com	(385) 487 - 0041
-------------------	--------------------------------	--	------------------

Commercial Services

Mark Mohan	Manager, Commercial Services	Mark.Mohan@Williams.com	(281) 744 - 0433
------------	------------------------------	--	------------------

Mouhamad Ahmad	Commercial Services Rep III	Mouhamad.Ahmad@Williams.com	(346) 267 - 4637
----------------	-----------------------------	--	------------------

David Allred	Commercial Services Rep Sr	David.S.Allred@Williams.com	(801) 971 - 8678
--------------	----------------------------	--	------------------

Megan Carroll	Commercial Services Rep III	Megan.Carroll@williams.com	(832) 767 - 7982
---------------	-----------------------------	--	------------------

Steven Cunningham	Commercial Services Rep Sr	Steven.Cunningham@williams.com	(713) 321 - 9487
-------------------	----------------------------	--	------------------

Marty Saldivar	Commercial Services Rep Sr	Marty.Saldivar@Williams.com	(206) 245 - 6422
----------------	----------------------------	--	------------------

Peter Paul Wong	Commercial Services Rep Sr	PeterPaul.Wong@williams.com	(832) 206 - 0821
-----------------	----------------------------	--	------------------

Transportation Services

Chad Campbell	Manager, Transportation Services	Chad.Campbell@Williams.com	(801) 554 - 0235
---------------	----------------------------------	--	------------------

Annette Bennion	Transportation Rep Lead	Annette.Bennion@williams.com	(801) 244 - 0938
-----------------	-------------------------	--	------------------

James Bonnett	Transportation Rep Lead	James.Bonnett@williams.com	(801) 232 - 4683
---------------	-------------------------	--	------------------

Bryce Blackburn	Transportation Rep II	Bryce.Blackburn@Williams.com	(801) 739 - 8306
-----------------	-----------------------	--	------------------

Curtis Mathews	Transportation Rep II	Curtis.Mathews@Williams.com	(385) 548 - 9331
----------------	-----------------------	--	------------------

Mark Miller	Transportation Rep III	Jeff.Miller@Williams.com	(801) 870 - 2102
-------------	------------------------	--	------------------

Juan (JP) Rincon	Transportation Rep II	Juan.Rincon@Williams.com	(385) 592 - 5299
------------------	-----------------------	--	------------------

Heather Walter	Transportation Rep III	Heather.Walter@williams.com	(385) 592 - 5299
Kyle Williams	Transportation Rep II	Kyle.Williams@Williams.com	(801) 738 - 4492

Thank you - Western Interstates Commercial team!

Carson Smyth (She/Her)

[Williams](#) | Business Analyst I | Western Interstates - Business Development
Email: Carson.Smyth@Williams.com | Cell: (918) 425 - 8760 | ICE: casmyth
650 Main Street, Suite 300, Salt Lake City, UT 84101
[Careers](#) | [LinkedIn](#) | [Facebook](#) | [Instagram](#) | [Newsroom](#)

